



THE PENNSYLVANIA LEADERSHIP CHARTER SCHOOL

School Profile 2025-2026

The Pennsylvania
**LEADERSHIP
CHARTER SCHOOL**

www.palcs.org | CEEB Code: 391441

At PALCS, our mission is to provide an individualized, growth-focused K-12 online public education in an engaging, technology rich environment that empowers students to reach their full academic and leadership potential.

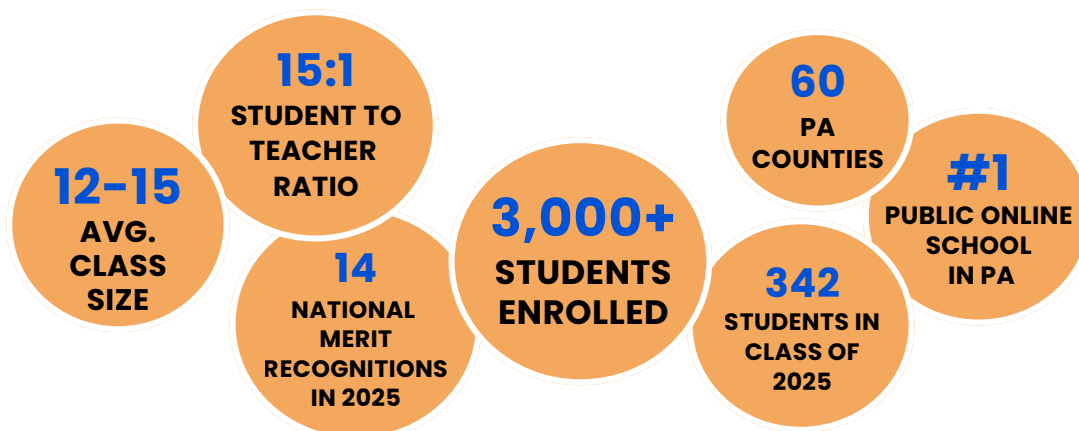


CURRICULUM & STUDENT LIFE

The Pennsylvania Leadership Charter School (PALCS) is a state-approved public cyber charter school for students in Kindergarten through grade 12 who reside within the Commonwealth of Pennsylvania. Students attend school online Monday - Friday during the school year, access lessons and submit assignments on our school website. Students are individually scheduled for classes, with the ability to select from over 200 course offerings.

The curriculum at PALCS meets or exceeds all Pennsylvania State Academic Standards. Courses are taught by highly qualified, certified teachers who work from one of the PALCS in-person sites. PALCS combines academically challenging, knowledge-based curriculum with the best teaching practices and the latest technology.

Textbooks and all learning materials are provided for students as well as various online resources. While the PA Standards serve as the foundation of our curriculum, the greatest strength resides with the teachers who develop their own unique courses, deliver instruction, create and grade assignments and interact with students on a daily basis.



TITLE I

Title I is a federal program that provides financial aid to schools to improve educational opportunities for students. At PALCS, Title I funding is allocated to address the needs of all of our students, including students groups that have been traditionally underrepresented in achieving mastery on state assessments. This funding includes programs, personnel, and services that students have direct access to as well as professional development training for teachers on how to address the needs of these specific subgroups.

DUAL ENROLLMENT

PALCS provides the opportunity for students to take a college course while enrolled in both high school and an approved Institution of Higher Education (IHE). Dual enrollment courses allow students to complete college-level coursework and earn both college credits and high school credits for the same course.

PALCS Dual Enrollment Partners:

Penn State Lehigh Valley, Delaware County Community College (DCCC), Community College of Beaver County (CCBC), Johnson College, Community College of Philadelphia, Montgomery County Community College

S.O.A.R.

SOAR is a credit recovery program that helps students earn graduation credits in half the time with focused, semester-long courses created by PALCS teachers. SOAR courses are offered in all core subjects (English, Math, Social Studies & Science).

ADMINISTRATION

Dr. Karla Johnson
Chief Executive Officer

Dr. Joey Rider-Bertrand
Chief Academic Officer

Michael Logue
High School Principal

Christopher Stiles
USP Principal

Dr. Steve Dziekonski
CPFA Head Administrator

SCHOOL COUNSELING

Shavaun McGinty
Supervisor of School Counseling

Samantha Murphy (A-L)
Jessica Moose (M-Z)
Class of 2026

Rebecca Walker (A-L)
Yakeita Sawyer (M-Z)
Class of 2027

Heather Prior (A-L)
Kelly O'Shura (M-Z)
Class of 2028

Jill DiPaolo (A-L)
Kristy Rattmann (M-Z)
Class of 2029

Mary Beth Stefanski
USP Counselor, Grades 9-12

Rachel Humnick
USP Counselor, Grades 9-10 (Cyber)

Lauren Mazzio
CPFA Counselor, Grades 9-12

Alyx Matchett
College & Financial Aid Advisor

PALCS MAIN CAMPUS

1332 Enterprise Drive
West Chester, PA 19380
Phone: (610) 701-3333

PALCS UNIVERSITY SCHOLARS PROGRAM (USP) CAMPUS

1585 Paoli Pike
West Chester, PA 19380
Phone: (610) 344-0524

PALCS CENTER FOR PERFORMING ARTS (CPFA) CAMPUS

211 Carter Drive, Suite C
West Chester, PA 19382
Phone: (610) 430-6525



THE PENNSYLVANIA LEADERSHIP CHARTER SCHOOL

School Profile 2025-2026

UNIVERSITY SCHOLARS PROGRAM (USP)

CURRICULUM & COURSE OFFERINGS*

The University Scholars Program (USP) is an application-based honors college-preparatory program within PALCS. This program offers a specialized, academically accelerated education curriculum to students in grades 6-12 through two methods: an on-site/online blended program in West Chester, PA, or a complete virtual program for statewide students.

USP is designed to maximize the intellectual potential for high-achieving, gifted, and motivated learners and to support and value each student's personal and academic achievements.

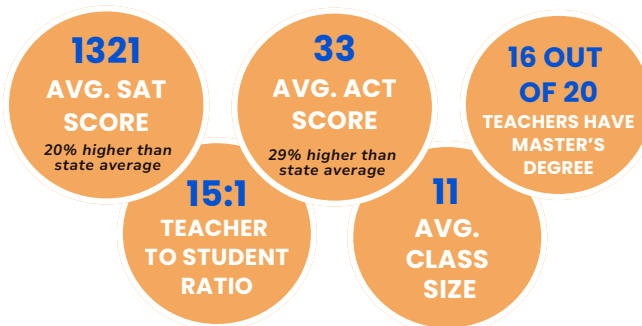
ENGLISH	MATH	SCIENCE	SOCIAL STUDIES
Hons American Literature Hons British Literature Hons World Literature AP Language & Composition AP Literature & Composition Hons Poetry Seminar Hons Creative Writing Hons Film as Literature	Hons Geometry Hons Algebra II AP Precalculus AP Calculus AB AP Calculus BC Hons Linear Algebra AP Statistics AP Computer Science	Hons Biology Hons Chemistry Hons Physics Hons Zoology AP Biology AP Chemistry AP Physics C AP Environmental Science	Hons Contemp. World History AP US History AP US Gov. & Politics AP Comp. Gov. & Politics AP European History AP Microeconomics AP Psychology

*Partial lists of courses offered. | Hons = Honors, AP = Advanced Placement

USP COLLEGE MATRICULATION*

Amherst College
Boston University
California Institute of Technology
Carnegie Mellon University
Cornell University
Drexel University
Harvard University
MIT
Penn State University - Schreyer Honors College
Princeton University
Temple University - Honors Program
University of Pennsylvania
University of Pittsburgh
Stanford University
West Chester University

*This is a partial list of colleges USP students will attend/have attended.



CENTER FOR PERFORMING & FINE ARTS (CPFA)

CURRICULUM & COURSE OFFERINGS*

The Center for Performing and Fine Arts (CPFA) is an audition-based arts-enrichment program for PALCS students. The program offers a pre-professional level arts education in theatre, dance, music and fine arts to students in grades 6-12 with exceptional aptitude, maturity and dedication. Students either attend on-site classes two days per week in West Chester, PA, or may participate through online courses.

MUSIC	DANCE	THEATRE	FINE ARTS
Mixed Ensemble (Int & Hons) Treble Ensemble (Int & Hons) Piano Musicianship (Int & Hons) Guitar Technique (Int & Hons) Chamber Orchestra (Int & Hons) AP Music Theory Digital Music Composition Hons Jazz Studies	Int Modern Dance Ballet (Int & Hons) Tap (Int & Hons) Jazz (Int & Hons) Broadway Jazz Dance Appreciation CPFA Dance Company Hons Advanced Technique	Hons Acting Intensive Hons Musical Theatre Directing & Theatre Production Hons Acting for the Camera Hons Film & Media Production Hons Screenwriting	Drawing, Painting & Illustration (Int & Hons) AP 2-D Design & 3D Design Photography (Int, Hons & AP) Graphic Design (Int, Hons & AP) Sculpture (Int, Hons & AP) Ceramics (Int, Hons & AP) Yearbook Design

*Partial lists of courses offered. | Hons = Honors, Int = Intermediate, AP = Advanced Placement

CPFA COLLEGE MATRICULATION*

Berklee College of Music
Boston Conservatory at Berklee
Kutztown University
New York University - Tisch School of the Arts
Point Park University
Savannah College of Art and Design
The Juilliard School

*This is a partial list of colleges CPFA students will attend/have attended.

CPFA HONOR SOCIETIES

Tri-M Music Honor Society
International Thespian Society
National Art Honor Society
National Honors Society of Dance Arts



USP ADMINISTRATION & COUNSELING

Christopher Stiles
USP Principal

Mary Beth Stefanski
USP Counselor, Grades 9-12

Rachel Humnicky
USP Counselor, Grades 9-10 (Cyber)

USP HIGHLIGHTS

- Curriculum designed for students in 95th percentile
- Small class sizes
- Synchronous hybrid model with in-person and virtual classes
- University-style schedule with seminar lessons

SCHOLARSHIPS AWARDED

- Presidential Scholars
- YoungArts Scholars
- YoungArts National Scholars
- Coca-Cola Scholars
- Robertson Scholars
- Stamps Scholars

STUDENT LIFE

- Academic Team
- AIC Student Council
- American Mathematics Competition
- Interact Club
- Math Team
- Mock Trial
- Model UN
- Summit Newspaper

CPFA ADMINISTRATION & COUNSELING

Dr. Steve Dziekonski
CPFA Head Administrator

Lauren Mazzio
CPFA Counselor, Grades 9-12

CPFA HIGHLIGHTS

Fall

- High School Play
- Jazz Mavericks Performance
- High School Dance Showcase
- Art Studio Tour
- Winter Music Concert

Spring

- Piano Recital
- High School Theatre Festival
- Instrumental Music Concert
- Senior Art Show
- High School Musical
- Spring Art Exhibition
- Dance Concert
- Senior Music Recital
- High School Film Festival
- Spring Vocal Music Concert



THE PENNSYLVANIA LEADERSHIP CHARTER SCHOOL

School Profile 2025-2026

PALCS GRADUATION REQUIREMENTS & COURSE OFFERINGS*

To receive a diploma, students must successfully complete 20.5 credits and a 0.5 credit Graduation Portfolio course for each year they are enrolled. In addition, students must take the Keystone examinations in Algebra, Biology, and Literature.

ENGLISH

4 CREDITS

English 9**	African American Lit	Mythology
English 10**	Children's Lit	Public Speaking
English 11**	Creative Writing	Shakespeare
English 12**	Film as Literature	Journalism

ARTS & HUMANITIES

1 CREDIT

Art of Architecture
Foundations of Art & Design
Drawing
Music Appreciation
AP Music Theory
Multimedia Music

SOCIAL STUDIES

3.5 CREDITS

US History**	AP Microeconomics
US Government**	AP Macroeconomics
Philosophy	AP US History
Sociology	AP World History
AP Human Geography	AP Psychology

HEALTH/PE

1 CREDIT

Health**
Physical Education**
Mind, Body, and Wellness

SCIENCE

3 CREDITS

Biology**	Forensic Science
Anatomy & Physiology	Marine Science
Anatomy	AP Chemistry
Botany	AP Physics
Environmental Science	Zoology I & II

TECH

1 CREDIT

Google Application
Integrated Technology
Graphic Communication
Computer Aided Design
AP Computer Science
Coding in HTML & CSS

MATH

3 CREDITS

Algebra 1**	Statistics & Probability
Algebra 2	Pre-Calculus
Geometry	AP Calculus AB
Mathematical Thinking	AP Calculus BC
Consumer Math	AP Statistics

ELECTIVES

4 CREDITS

Introduction to Business
Principles of Marketing
Foundations of Leadership
Spanish I, II, III (Hons), IV (Hons),
V (Hons), AP
French I, II, III, IV (Hons)

GRADUATION PORTFOLIO

0.5 CREDITS PER YEAR

Required semester long courses designed to give students the tools, knowledge, and experience that will help them identify potential career paths and transition them into their chosen direction after high school.

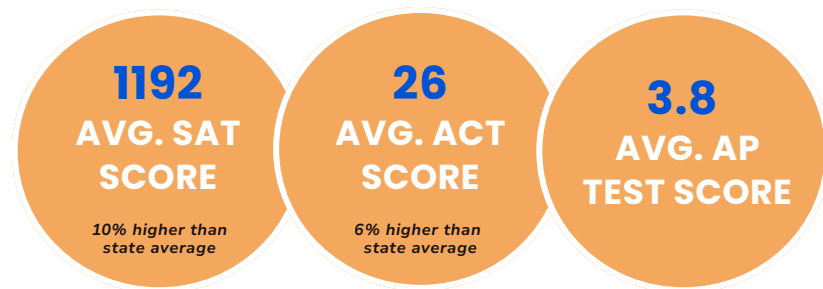
AP COURSES*

Language & Comp., Literature & Comp., US Government, US History, World History, Human Geography, Psychology, Government and Politics, Microeconomics, Macroeconomics, Calculus AB & BC, Statistics, Biology, Chemistry, Physics C, Environmental Science, Music Theory, Art Portfolio, Computer Science, Spanish

*Partial lists of courses offered. | **Required courses.

HONORS COURSES*

English 9-12, American Literature, British Literature, US Government, US History, World History, Biology, Chemistry, Physics, Algebra I & II, Geometry, Pre-Calculus, Introduction to Engineering, Music Theory, Programming, Spanish III-V, French IV



In 2025, 187 PALCS students took 361 AP exams with an average score of 3.8.

89% of these students obtained a score of 3 or higher.

COLLEGE MATRICULATION: PALCS CLASS OF 2025*

Arkansas State University, Broward College, Community College of Baltimore County, Community College of Allegheny County, Cedarville University, Concordia University, Drexel University, Duquesne University, Elizabethtown College, Elon University, Fashion Institute of Technology, Flagler College, Florida Institute of Technology, Georgia Institute of Technology, Gwynedd Mercy University, Harvard University, Kutztown University, LaSalle University, Liberty University, Lincoln Tech, Lycoming College, Millersville University, MIT, Montgomery County Community College, Moore College of Art, Nazareth College, Neumann University, New York University, Pace University, Penn College of Technology, Penn State University, Point Park University, Reading Hospital School of Health Sciences, Rochester Institute of Technology, Rowan University, Shippensburg University, St. Joseph's University, Stanford University, Temple University, The Julliard School, Philadelphia University, University of Alabama, University of Pittsburgh, University of Richmond, University of Rochester, University of South Carolina, University of Vermont, Vanderbilt University, Villanova University, West Chester University

*This is a partial list of colleges PALCS students will attend.

GRADING SCALE

Letter Grade	Numeric Grade	Academic & College Prep	Honors	AP/DE/CL
A	94-100	4.00	4.50	5.00
A-	90-93	3.70	4.30	4.70
B+	89-87	3.30	4.00	4.30
B	86-84	3.00	3.70	4.00
B-	83-80	2.70	3.30	3.70
C+	79-77	2.30	3.00	3.30
C	76-74	2.00	2.70	3.00
C-	73-70	1.70	2.50	2.70
D+	69-67	1.30	1.30	1.30
D	66-64	1.00	1.00	1.00
D-	63-60	0.70	0.70	0.70
F	59-0	0.00	0.00	0.00

DE = Dual Enrollment, CL = College Level, AP = Adv. Placement

GRADE POINT AVERAGE (GPA)

High school level courses receive quality points based on credit worth and final letter grade. Quality points are used to calculate the grade point average.

Honors and Advanced Placement courses are weighted. Courses graded as Pass/Fail are not included in the GPA.

CLASS RANK

Class rank is determined by the grade point average of all students in a graduating class. Class rank is calculated after the first semester and again at the end of each school year.

2025 POST GRADUATE PLANS

