

24-25



The Pennsylvania
LEADERSHIP
CHARTER SCHOOL

ANNUAL SNAPSHOT

Table of Contents

<u>Mission & Vision</u>	3
<u>CEO Note</u>	4
<u>Organizational Changes</u>	5
<u>Financial Overview</u>	7
<u>Staffing</u>	8
<u>Enrollment & Student Demographics</u>	9
<u>Testing</u>	10
<u>Career Technical Education & Dual Enrollment</u>	11
<u>Class of 2025</u>	12
<u>Parent Surveys</u>	13

Mission & Vision



PALCS Chiefs & Directors

Mission

The mission of The Pennsylvania Leadership Charter School (PALCS) is to provide an individualized, growth-focused K-12 online public education in an engaging, technology-rich environment that empowers students to reach their full academic and leadership potential.

Vision

PALCS will be widely recognized as Pennsylvania's exemplary online charter school providing superior educational opportunities to students across diverse backgrounds.

Message from the CEO

Dear PALCS Community,

As we reflect on the 2024-2025 school year, I am proud to share the remarkable progress our students, families, faculty, and staff have made together. At the Pennsylvania Leadership Charter School, our mission remains clear: to ensure that every student has access to an individualized, growth-focused, and engaging education. During the 2024-2025 school year, we continued to strengthen our school community through innovation, collaboration, and dedicated focus on student achievement.

- We entered the 24-25 school year with a renewed focus on engagement and academic growth. Throughout the 24-25 school year, we implemented several new initiatives designed to enrich the learning experience of our students:
- Innovative technology upgrades that expanded access to interactive tools and real-time data, helping students and learning Coaches monitor progress through PALCSchool.

Expanded accelerated learning opportunities by ensuring gifted students have the support that they need to continue to challenge their educational path.

These efforts reflect our belief that every student deserves a learning pathway that honors their strengths, supports their needs, and encourages their continued growth.

As we move forward, we remain committed to ensuring that PALCS is a place where students are inspired to learn and are supported by caring adults. Thank you for your partnership, trust, and engagement throughout the 2024-2025 school year.

Dr. Karla Johnson

Dr. Karla Johnson
Chief Executive Officer



Organizational Changes



Welcoming New CEO & CAO

- **Dr. Karla Johnson** transitioned from the role of Chief Academic Officer (CAO) to **Chief Executive Officer** (CEO).
- **Dr. Joey Rider-Bertrand** joined PALCS as the new **Chief Academic Officer** (CAO).



Welcoming New Board Members

- The PALCS Board of Directors welcomed **3 new members** this year, including a **PALCS alum** from the Class of 2017 and 2 current **PALCS parents**.



Cheswick Building Opening

- The PALCS Pittsburgh team relocated to a **new office in Cheswick**, designed to be a **community space** for PALCS families in the West.

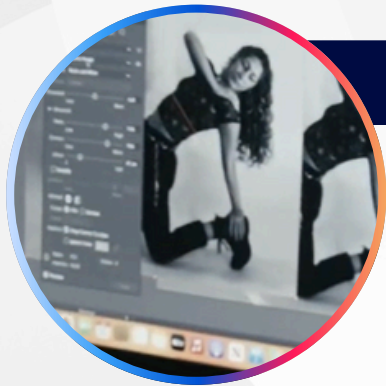
Organizational Changes

PALCSchool App Launch



- This year, the Online Learning team at PALCS officially launched the **new PALCSchool app** which allows easy access on the go!

Online USP & CPFA Courses



- PALCS significantly expanded its virtual enrichment opportunities this year—now offering **21 virtual CPFA** courses and **37 virtual USP** courses for students statewide.

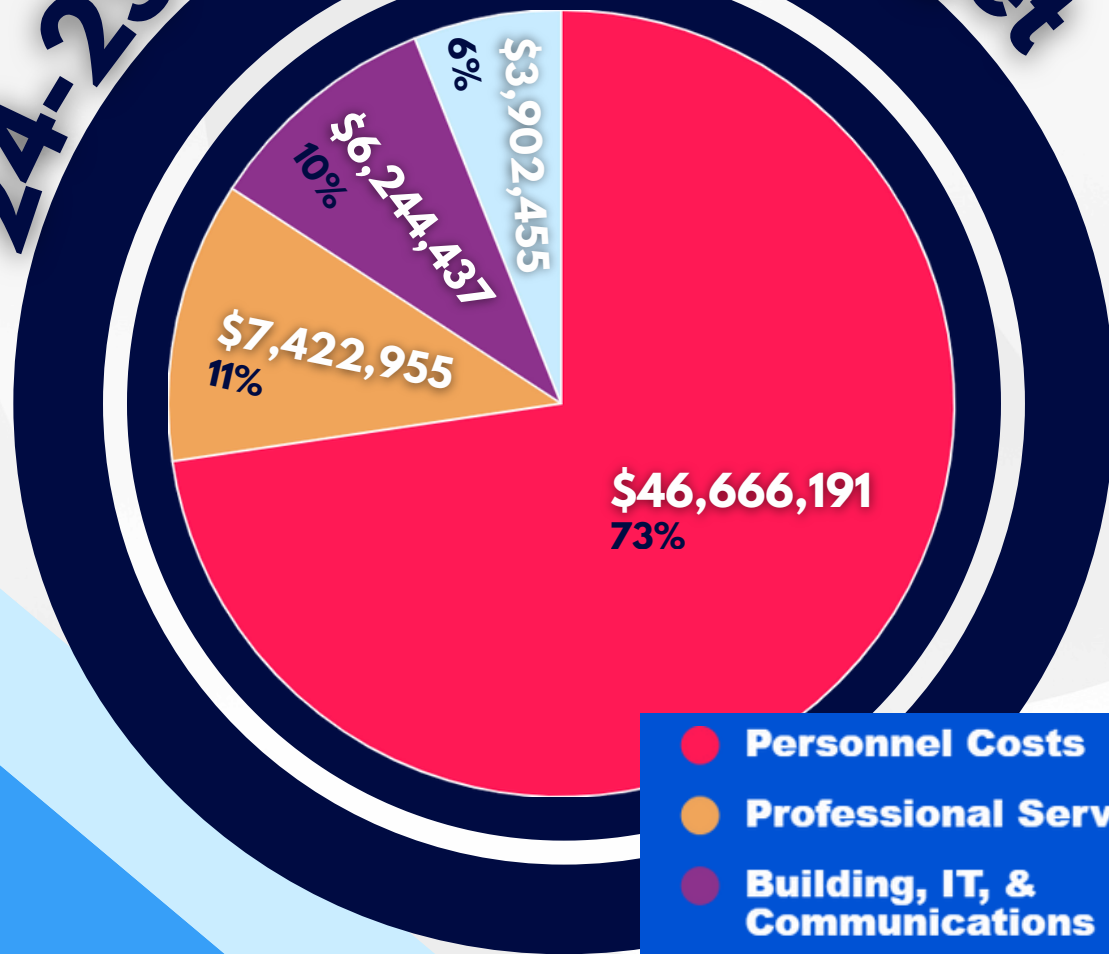
Online State Testing Sites



- PALCS tripled the number of online state testing sites this year, increasing from 9 to **34 PSSA sites** and from 8 to **32 Keystone sites**.

Financial Overview

24-25 Operating Budget



- Personnel Costs
- Professional Services
- Building, IT, & Communications
- Other Expenses

Staffing



327

Instructional
Faculty

152

Non-
Instructional
Staff

Student-Teacher Ratios

10:1

USP, CPFA,
Elementary,
& Middle
School

14:1

Special
Education

20:1

High
School

Enrollment

2,346

**Returning
Students**

1,189

**New
Students**

Student Demographics

Top Geographic Locations

Philadelphia SD
West Chester Area SD
North Penn SD
Downingtown Area SD
Upper Darby SD
Pittsburgh SD
Coatesville Area SD
Spring-Ford Area SD
Phoenixville Area SD
East Penn SD

718

**Special
Education
Students**

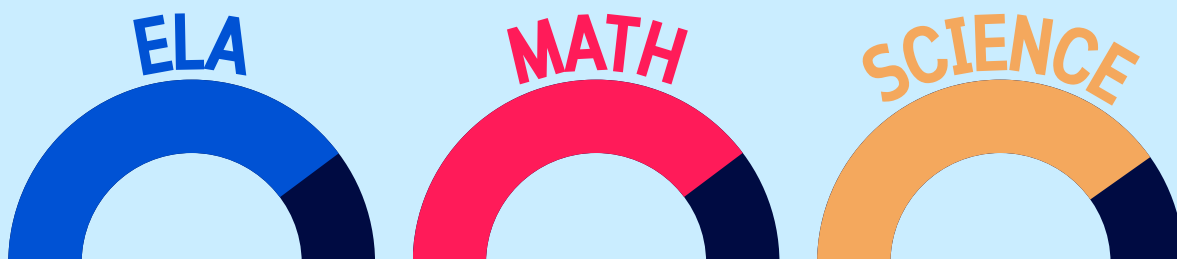
22

**English
Language
Learners**

Testing

Keystones & PSSAs

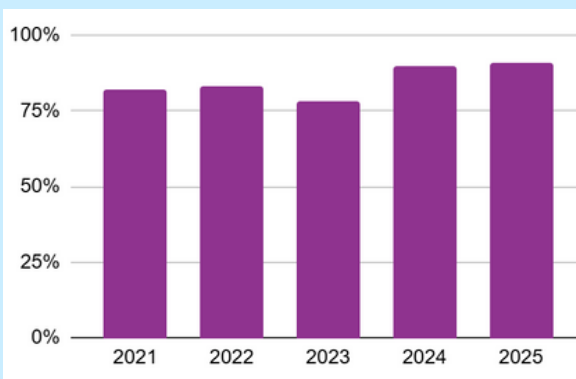
Schoolwide Participation Rate



Advanced Placement (AP)



% of Total AP Students with scores 3+



*Over last 5 years

PSAT & SAT



Career Technical Education

24

**Students
Enrolled in
CTE
Programs**

Popular CTE Pathways

Automotive
Cosmetology
Culinary Arts
Graphic Design

CTC Partners

Reading Muhlenberg CTC
Northern Westmoreland CTC
Forbes Road CTC
Central Montco Tech High School
Butler County Area Vocational Tech School
Berks County CTC
Indiana County CTC
Huntingdon County CTC

Dual Enrollment

70

**Students
Participated in
Dual
Enrollment**

Common Courses

English Composition I
English Composition II
Introduction to Sociology
General Psychology
Precalculus

Dual Enrollment Partners

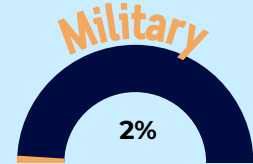
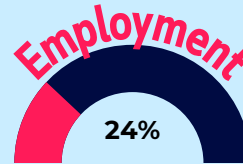
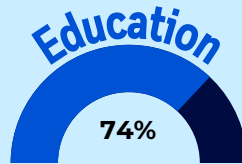
Penn State Lehigh Valley
Delaware County Community College
Community College of Beaver County
Johnson College
Community College of Philadelphia
Montgomery County Community College

Class of 2025

90%

Graduation Rate
for Eligible Students

Post Graduation Plans



College Matriculation

Amherst College
Berklee College of Music
Boston Conservatory at Berklee
Boston University
California Institute of Technology
Carnegie Mellon University
Cornell University
Drexel University
Harvard University
Kutztown University
LaSalle University
Massachusetts Institute of
Technology
Millersville University
New York University

Pennsylvania State University
Point Park University
Saint Joseph's University
Savannah College of Art and Design
Stanford University
Temple University
The Julliard School
University of Alabama
University of Pennsylvania
University of Pittsburgh
University of South Carolina
University of Vermont
West Chester University
Villanova University



Parent Surveys

8.5

Average Satisfaction Score (out of 10) with **clarity of communication** received from PALCS.

5/6

Parents **agree or strongly agree** they are **satisfied with communication** from PALCS Leadership.

76%

Of Parents **agree or strongly agree** they are satisfied with communication from their child's teacher(s).

76%

Of Parents **agree or strongly agree** there are **many opportunities to be involved** in their child's education.

***Based on responses from 24-25 Home and School Communication Survey**



Dr. Karla Johnson- CAO

Mrs. Clothier, Elem Principal

Megan Anthony

Mrs. McGoldrick

Dr. Alex Rausch

Jennifer Schelling

Christina Strellec

Katy Hammond

Ms. Loladze

Ms. Devinney

The Pennsylvania
LEADERSHIP
CHARTER SCHOOL